

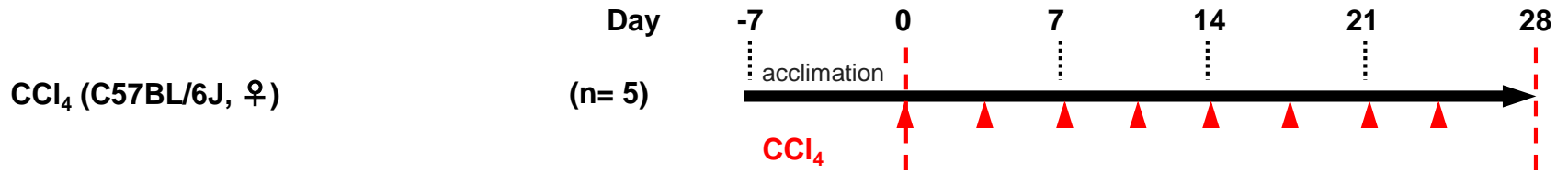


CRO service specialized in fibrosis/inflammation research

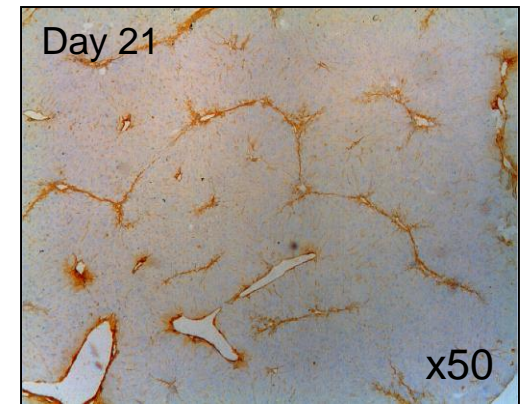
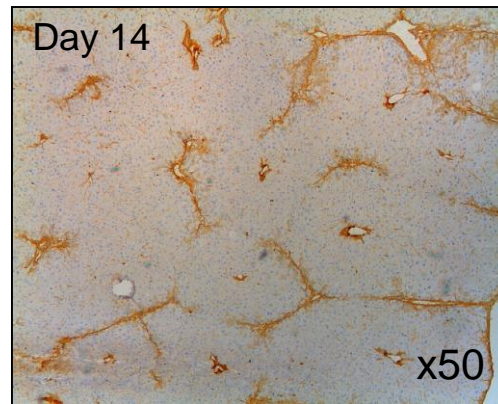
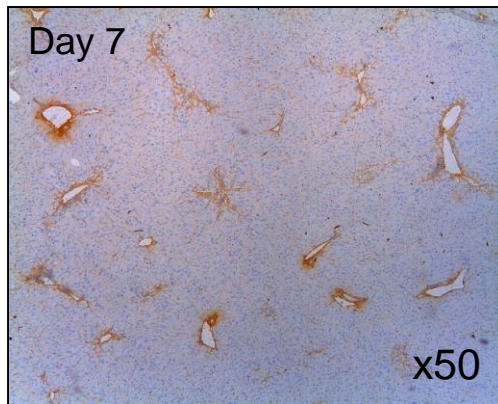
- Pharmacology study using CCl₄ model mice -

SMC Laboratories, Inc.

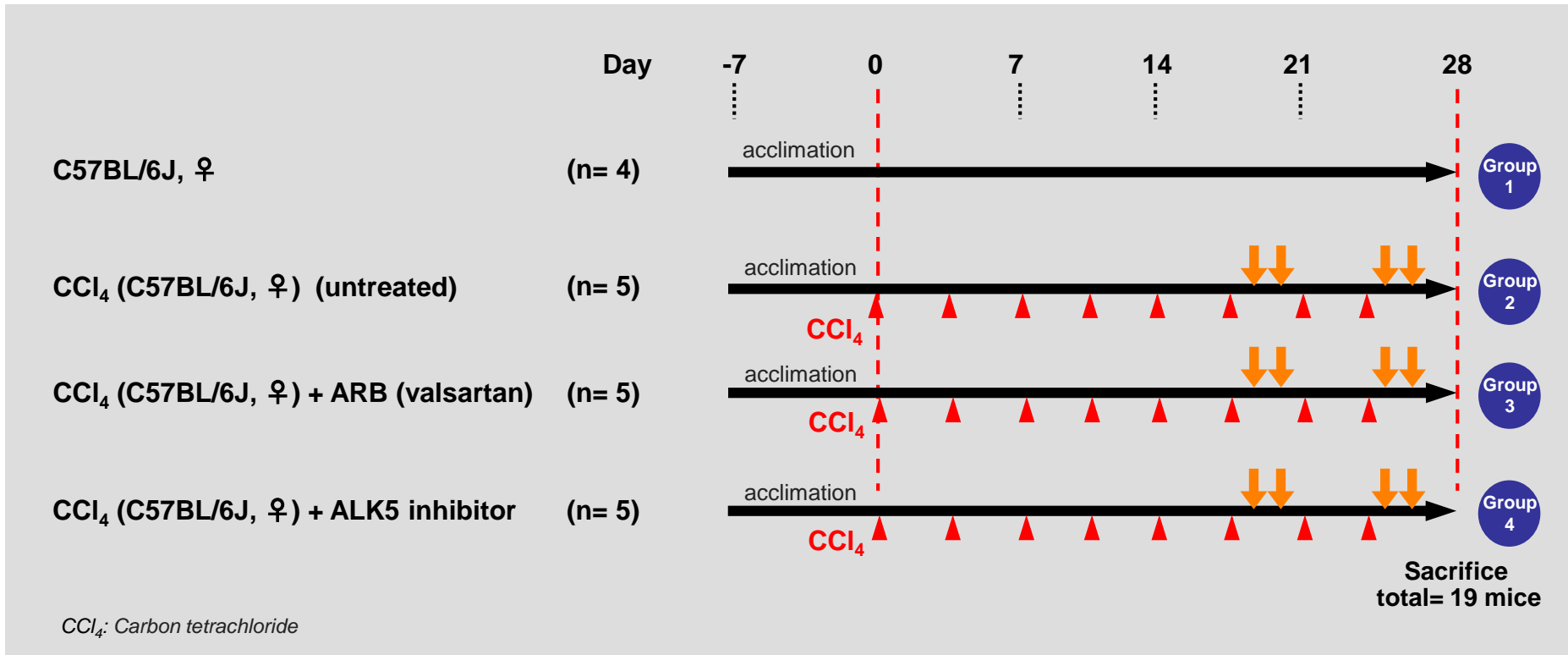
smccro-lab.com



Collagen Type 3



■ Collagen deposition is increased with the CCl₄ administration.



Analyses

1. General

- Body weight
- Liver weight
- Liver-to-body weight ratio

2. Histopathological analyses

- Immunostaining
 - Collagen Type 1
 - Collagen Type 3

3. Gene expression assays

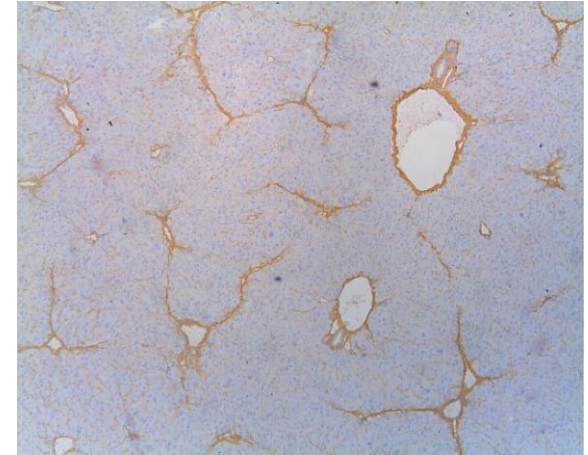
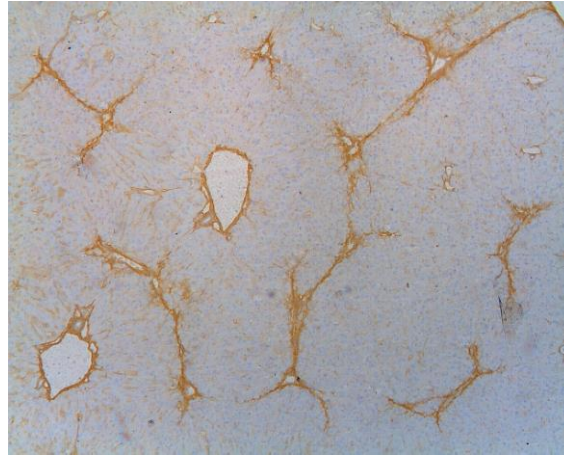
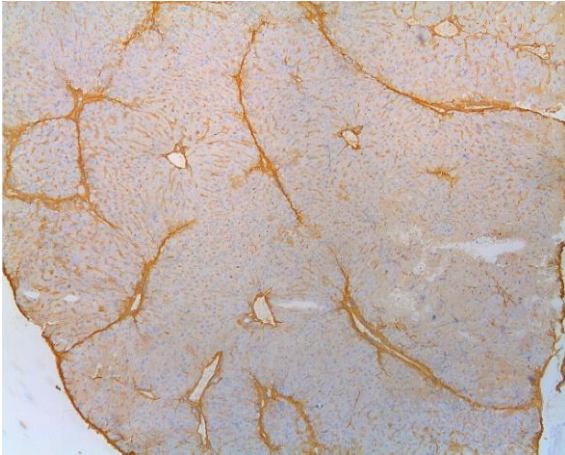
- α -SMA
- Collagen Type 1
- Collagen Type 3
- TIMP-1

Untreated

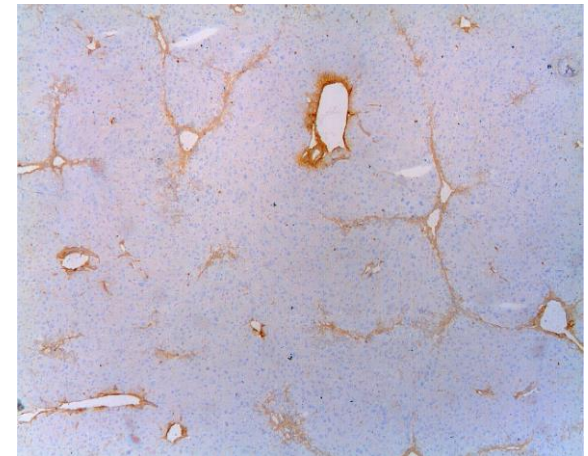
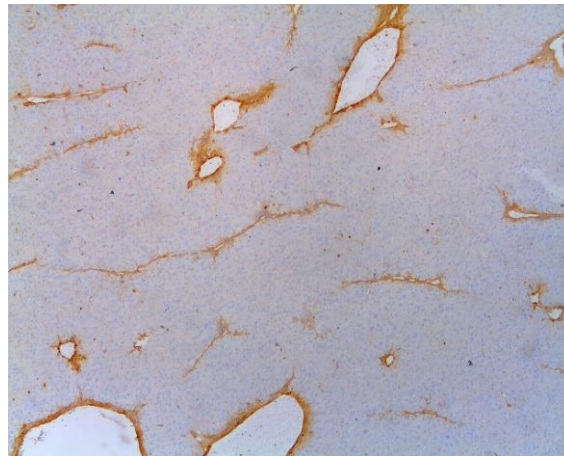
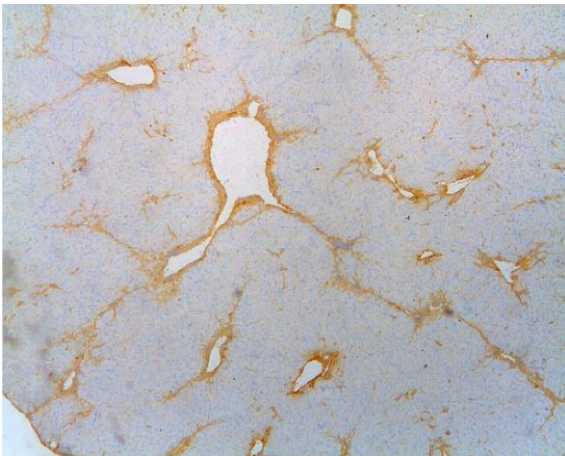
ARB

ALK5 inhibitor

Collagen Type 1

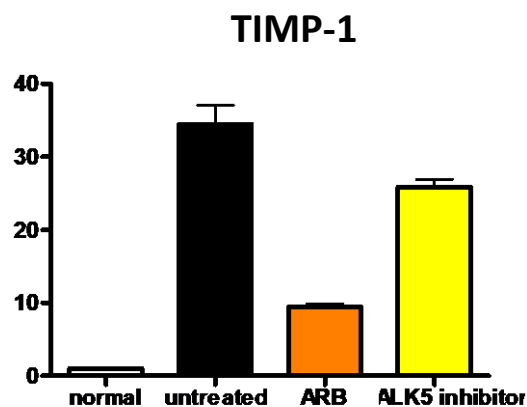
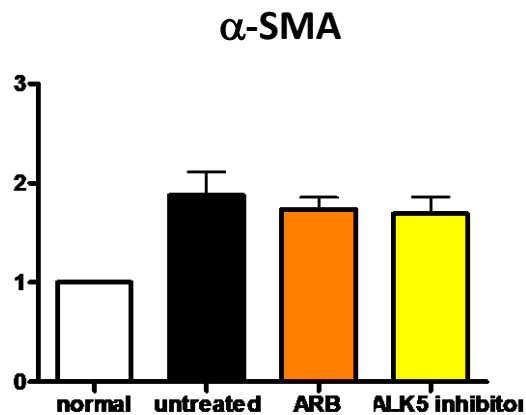
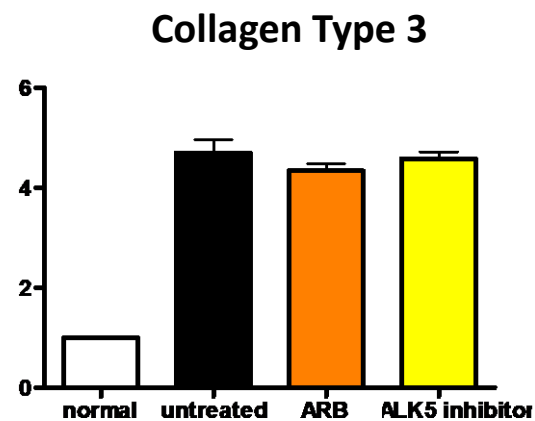
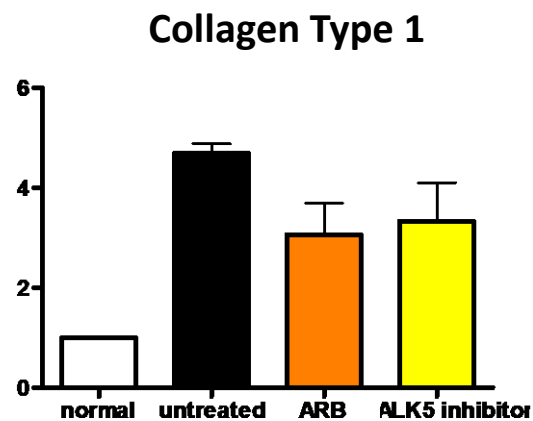


Collagen Type 3



(x50)

■ ARB (valsartan) and ALK5 inhibitor decreased CCl₄-induced collagen deposition



- CCl₄ treatment increased Collagen Type 1, Collagen Type 3, α -SMA and TIMP-1 gene expression.
- ARB (valsartan) and ALK5 inhibitor decreased Collagen Type 1 and TIMP-1 gene expression.